



◆ LEGENDEX ◆

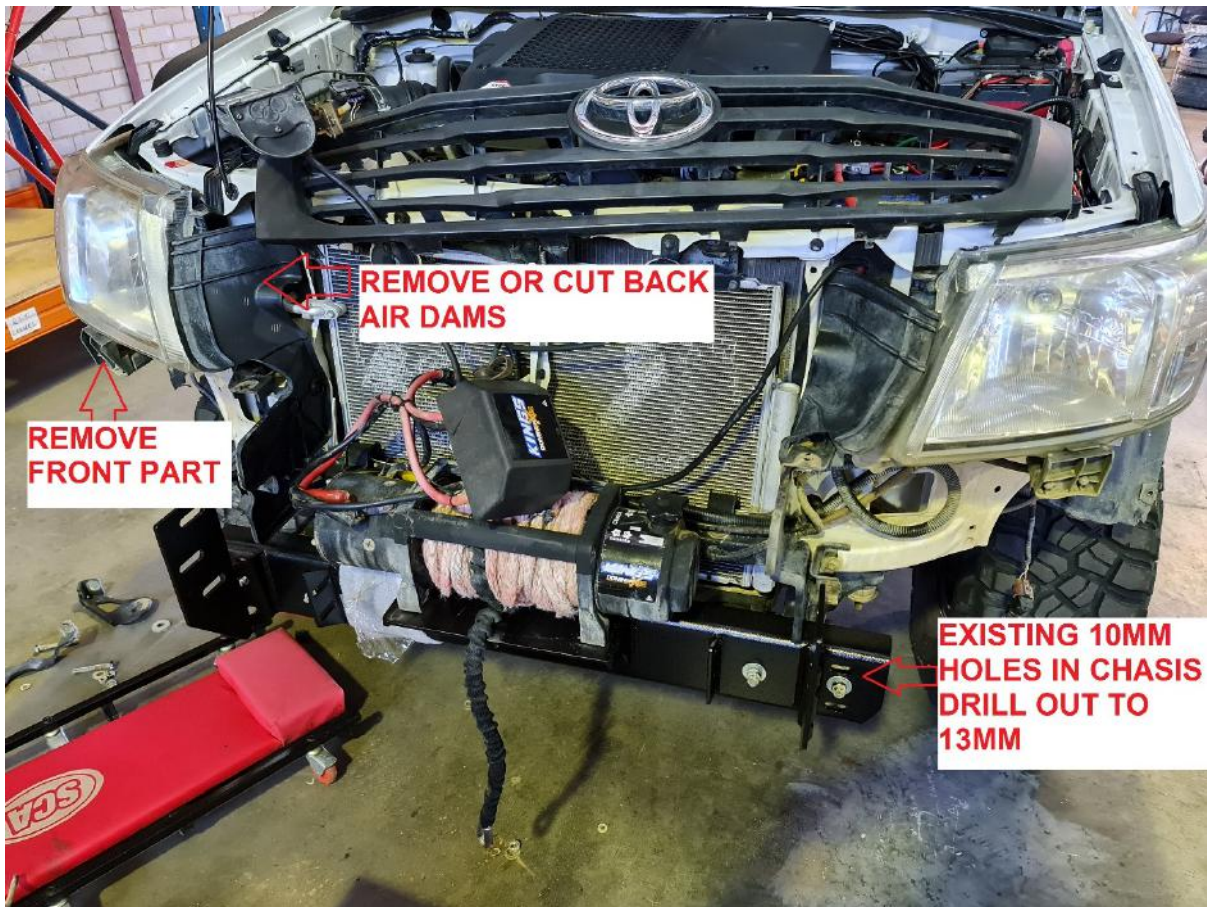
Extreme Series Bullbar

Front points only - Rated to 3.75T - NOT FOR
SNATCHING

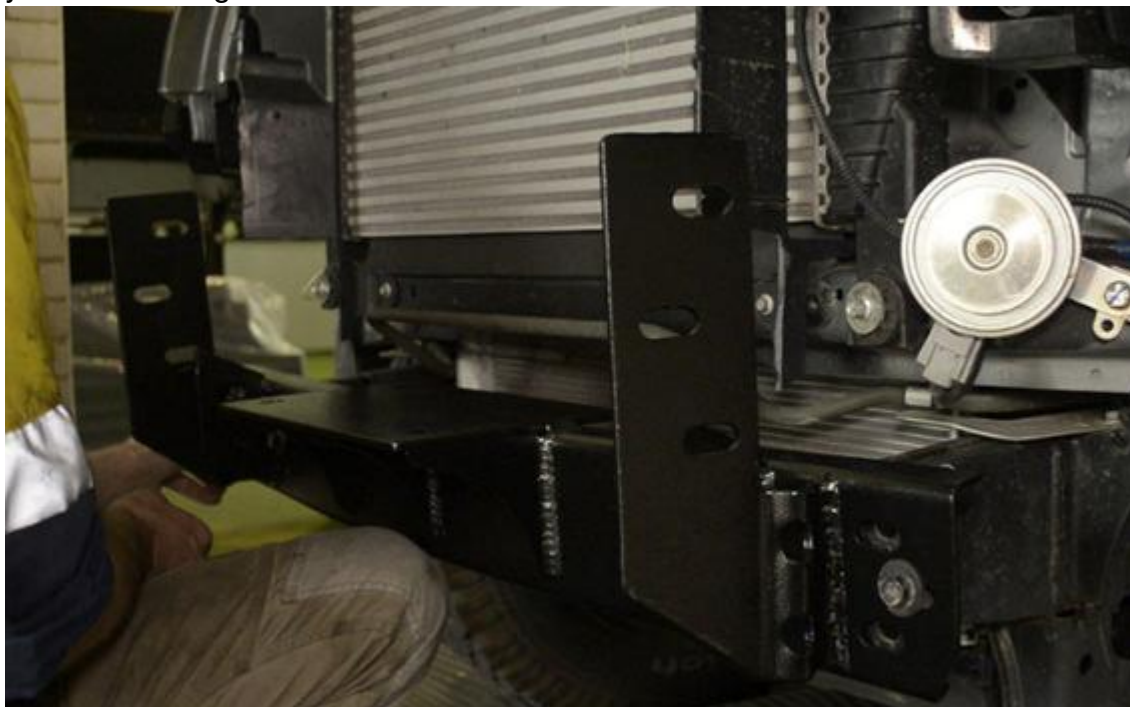


- 1) Remove grill, front bumper bar, bumper reinforcement and lower bumper support brackets.

◆ LEGENDEX ◆



- 2) Install the cradle onto the chassis rail ends. Bolts should be finger Tight as you need to align the bulbar later.



- 3) We recommend you bolt on cradle finger tight enough so you can move the cradle left to right if you need too. Use 10-15mm foam (clark rubber) or cardboard of equal depth and tape to the bulbar where bar meets guards, use a tape which does not affect the paint. See images below typical image



This will create an even gap on both sides, vs trying to align 1 side at a time. We also recommend using same foam under the head lights to maintain the correct gap

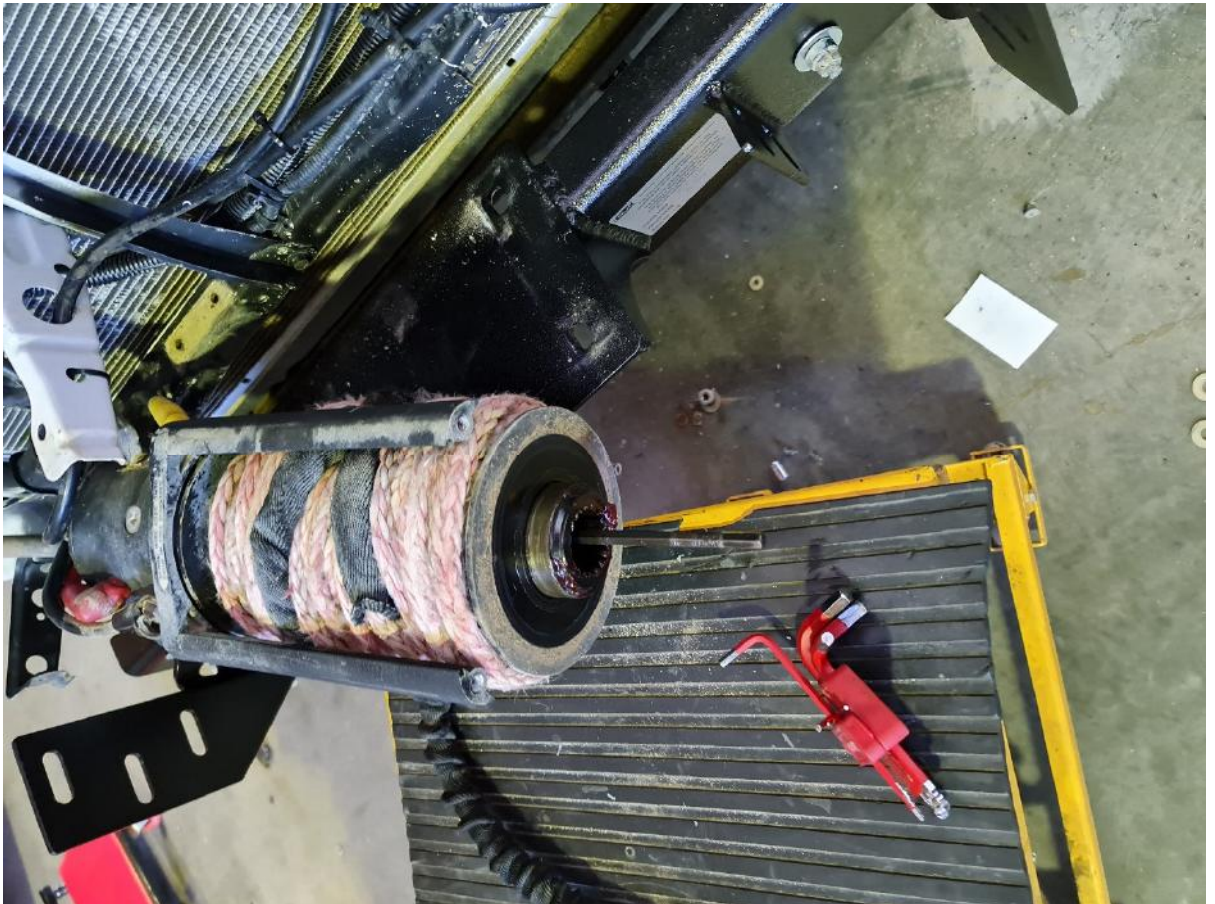
- 4) At this point with everything loose do a quick line up with foam in place. Once the bar is aligned left to right you can tighten the cradle. At this point install all the bolts loose into slots. If you have a helping hand have them hold bar in place while you tighten the middle bolt only to about 70% this will allow you to tilt the bar back or forth to bring it into line with the guards. It also has some play up and down if needed.

◆ LEGENDEX ◆



- 5) The black inner guards need to be trimmed to suit the profile of the bulbar and be secured in place so they do not move around.

- 6) NOTE : If you have a large winch you will need rotate clutch lever to avoid clash with the bulbar.
- 7) GRILL NOTE : WE RECOMMEND YOU PURCHASE 5MM RUBBER ADHESIVE TAPE PUT 2 LITTLE TABS UNDER THE GRILLE SO IT DOES NOT RUB ON THE BULLBAR. ALSO CABLE TIE GRILL BACK TO RADITOR SUPPORT



Alignment

The bulbar has slotted holes which allows the bar to be adjusted forwards or backwards on either side. If you have done without foam and have 10mm gap on the left side and 6mm gap on the right side the bar should be repositioned to create an even 8mm gap on both sides.

Pinch Weld & Movement.

You may prefer to fill the gaps between bar and guard with pinch weld (not supplied) Available from clark rubber or online you can purchase 1m bulb type pinch weld for approx. \$12 per meter. If you have heavy loaded 4wd, eg canopy or tools you may find your body

moves far more than standard tub and that your bar needs to be positioned further away from the guards, in this case the use of pinch weld may suit your needs to give the continuous look

Paint Protection

If you have purchased a colour coded bulbar, you must keep in mind the paint is fresh, while it is 2pac painted and baked the coating takes several weeks to fully cure and harden, in this time you should minimize the amount of debris which can strike your bar. If you do get stone chips later in time you can purchase paint matched pens from super cheap for approx. \$34. Its critical you maintain and look after your bar by touching up stone chips then light buff to blend in.